
SAT[®]

Overview of the SAT and Key Components of the Assessment System

Asa Gordon
Director of K12

collegeboard.org/illinois

Overview

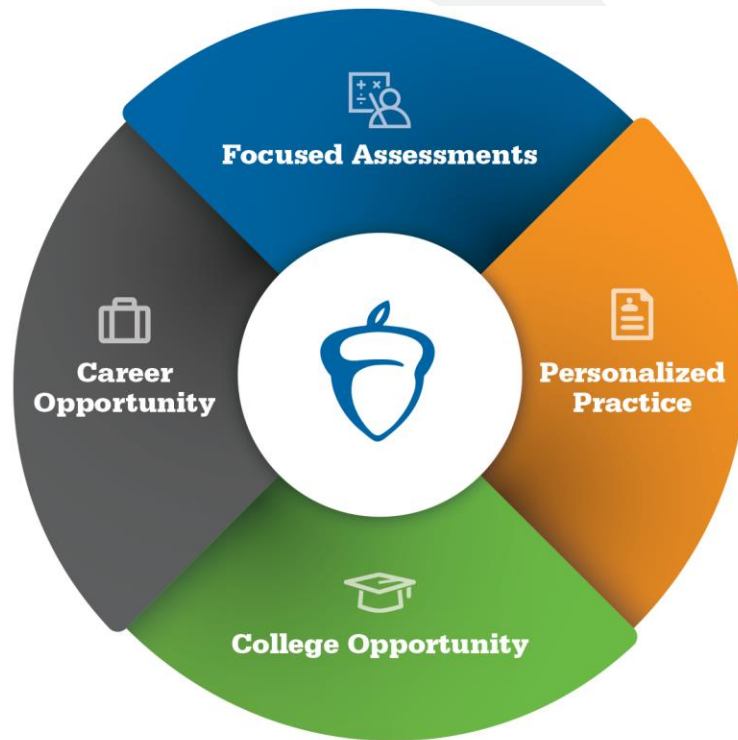
- ISBE and SAT Implementation Updates
- ▶ Review of SAT and the SAT Suite of Assessments
 - ▶ Assessment Scoring, Vertical Growth Scale & Benchmarks
- ▶ Khan Academy
 - ▶ Scholarships, AP Potential and Fee Waivers
- ▶ Data Portal
 - ▶ Educators and Students
- ▶ Resources

ISBE Updates – SAT Administration

- ▶ On July 11, ISBE announced SAT will replace PARCC at the high school level
- ▶ See <http://www.isbe.net/news/2016/july11.htm>
- ▶ All grade 11 students
- ▶ Initial Test Date: Wednesday, April 5, 2017
- ▶ Makeup Test Date: Tuesday, April 25, 2017
- ▶ Paper/Pencil format in Spring 2017

The College Board Readiness & Success System

Beyond tests. More opportunities.



- ▶ **Easier** for students to navigate a path through high school, college and career
- ▶ Extraordinary, **exclusive** partnerships that deliver **unprecedented** benefits to students, educators, and states/districts

The College Board Readiness & Success System

“I’m overwhelmed by all I have to do”



Focused Assessments

Enabling students to concentrate on what matters most in classroom work.

Key Components

- ▶ Focused and useful
- ▶ Open and clear
- ▶ Common scale and scores over time
- ▶ Reporting connected to classroom work

The College Board Readiness & Success System



Personalized Practice

Strengthening
student
achievement
with free,
focused support.

“I’m trying, but I’m not getting better.”

Key Components

- ▶ Content partnerships with:
 - ▶ Classroom teachers
 - ▶ Khan Academy
- ▶ Delivery partnerships with
Community-based
Organizations like Boys & Girls
Club

The College Board Readiness & Success System

“I can’t afford college anyway.”

Key Components

- ▶ AP Potential
- ▶ Fee Waivers
- ▶ Expanded scholarship opportunities
- ▶ SAT School Day



College Opportunity

Removing barriers to applying
and paying for college.

About the Redesigned SAT®

**Evidence-Based
Reading and Writing**

200-800 points

Math

200-800 points

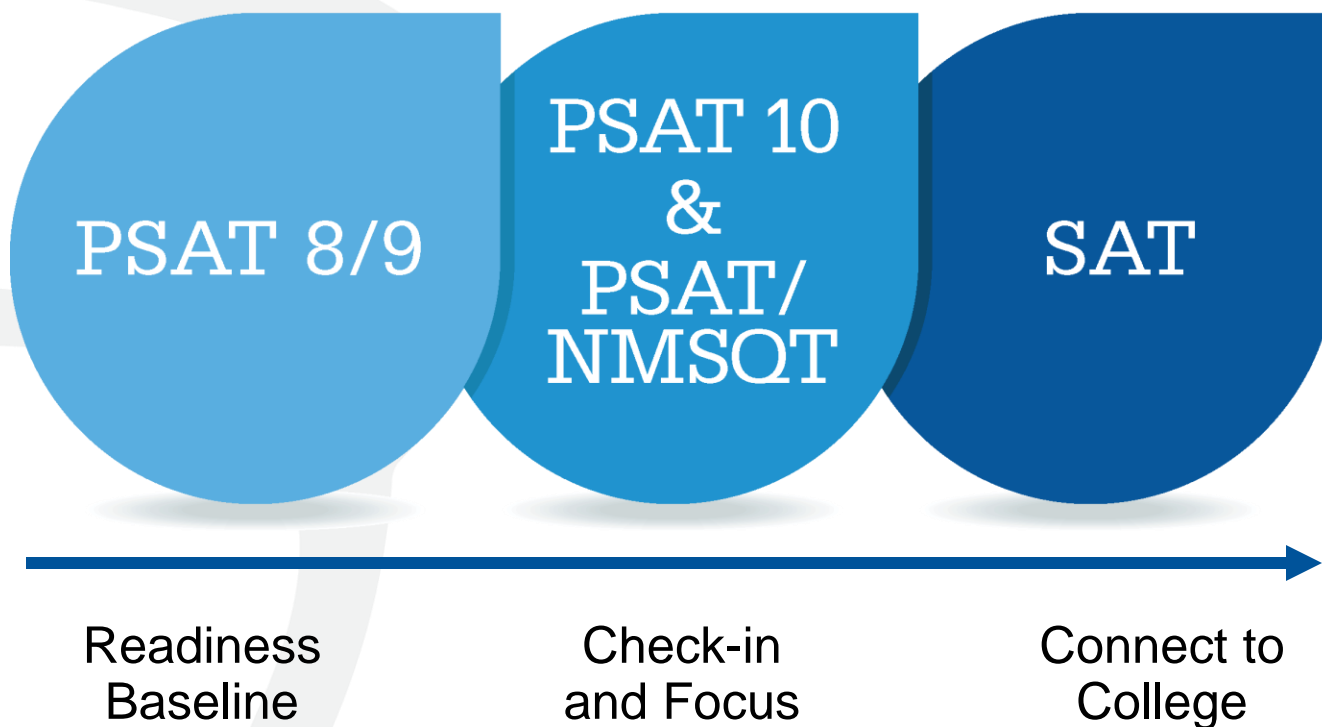
Essay

(separate scores)

3 Hours

50 Minutes

The SAT[®] Suite of Assessments



Eight Key Changes to the SAT[®]



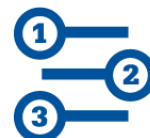
Words in Context



Command of
Evidence



Essay Analyzing a
Source



Math that Matters
Most



Problems Grounded
in Real-World
Contexts



Analysis in Science
and in History/Social
Studies



U.S. Founding
Documents and the
Great Global
Conversation



No Penalty for
Guessing

Words in Context



Students need to:

- ▶ Interpret meaning based on context
- ▶ Master relevant vocabulary
- ▶ Engage in close reading

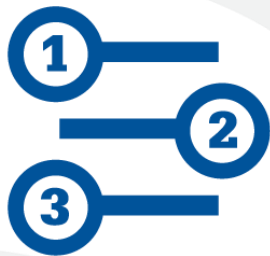
Words in Context (Reading Test)

The production, circulation, and reception of public knowledge is a complex process. It is generally accepted that public knowledge should be authoritative, but there is not always **common** agreement about what the public needs to know, who is best placed to relate and explain it, and how authoritative reputations should be determined and evaluated.

14. As used in [line 15](#), “common” most nearly means

- A. numerous.
- B. familiar.
- C. widespread.
- D. ordinary.

Math That Matters Most



Current research shows that three key areas most contribute to readiness for college and career training:

- ▶ Problem Solving and Data Analysis (quantitative literacy)
- ▶ Heart of Algebra (mastery of linear equations)
- ▶ Passport to Advanced Math (familiarity with more complex equations)

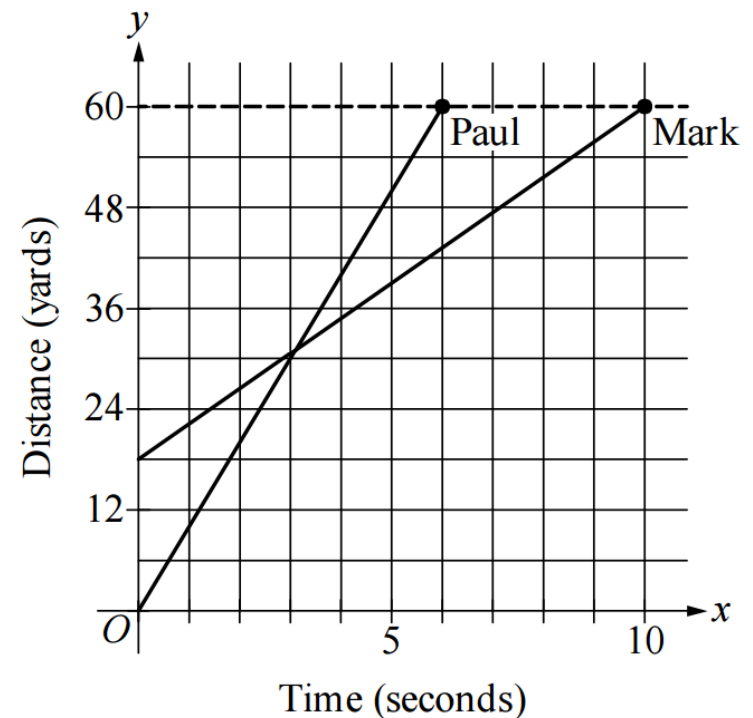
Math Test – SAT (Math w. Calculator)

Problem Solving and Data Analysis (Easy)

2. The graph above shows the positions of Paul and Mark during a race. Paul and Mark each ran at a constant rate, and Mark was given a head start to shorten the distance he needed to run. Paul finished the race in 6 seconds, and Mark finished the race in 10 seconds. According to the graph, Mark was given a head start of how many yards?

- A. 3
- B. 12
- C. 18
- D. 24

Math: Question 2



Math with a Calculator

Problem Solving & Data Analysis

6. The table above shows a summary of 1,200 responses to a survey question. Based on the table, how many of those surveyed get most of their medical information from either a doctor or the Internet?

- A. 865
- B. 887
- C. 912
- D. 926

Where Do People Get Most of Their Medical Information?	
Source	Percent of those surveyed
Doctor	63%
Internet	13%
Magazines/ brochures	9%
Pharmacy	6%
Television	2%
Other/none of the above	7%

Math Test – SAT [Math w. Calculator]

Heart of Algebra (Medium)

32.

$$2(5x-20) - (15+8x) = 7$$

What value of x satisfies the equation above?

31

	/	/	
•	•	•	•
	0	0	0
1	1	1	1
2	2	2	2
3	3	3	3
4	4	4	4
5	5	5	5
6	6	6	6
7	7	7	7
8	8	8	8
9	9	9	9

Calculator
Allowed



Math Test – SAT [Math w. Calculator]

Heart of Algebra (Medium)

The correct answer is 31. The equation can be solved using the steps shown below.

$$2(5x - 20) - 15 - 8x = 7$$

$$2(5x) - 2(20) - 15 - 8x = 7 \quad (\text{Apply the distributive property.})$$

$$10x - 40 - 15 - 8x = 7 \quad (\text{Multiply.})$$

$$2x - 55 = 7 \quad (\text{Combine like terms.})$$

$$2x = 62 \quad (\text{Add 55 to both sides of the equation.})$$

$$x = 31 \quad (\text{Divide both sides of the equation by 2.})$$

Essay Analyzing a Source



The redesigned essay:

- ▶ More closely mirrors college writing assignments
- ▶ Cultivates close reading, careful analysis, and clear writing
- ▶ Promotes the practice of reading a wide variety of arguments and analyzing an author's work

Redesigned SAT® Essay Prompt

Prompt

1

As you read the passage below, consider how **David Yarnold** uses

- evidence, such as facts or examples, to support claims.
- reasoning to develop ideas and to connect claims and evidence.
- stylistic or persuasive elements, such as word choice or appeals to emotion, to add power to the ideas expressed.

2

Adapted from David Yarnold, “Don’t Throw Bald Eagles Under the Bus.”
© 2013 by Politico, LLC. Originally published December 15, 2013.

3

Write an essay in which you explain how **David Yarnold builds an argument** to persuade his audience that **government agencies need to do more to protect eagles**. In your essay, analyze how Yarnold uses one or more of the features listed in the box above (or features of your own choice) to strengthen the logic and persuasiveness of his argument. Be sure that your analysis focuses on the most relevant features of the passage.

Your essay should not explain whether you agree with **Yarnold’s** claims, but rather explain how Yarnold builds an argument to persuade his audience.

Problems Grounded in Real-World Context



Students are asked to engage with questions that:

- ▶ Directly relate to the work performed in college and career
- ▶ Include charts, graphs, and passages likely to be encountered in science, social science, and other majors and careers
- ▶ Feature multistep applications to solve problems in science, social science, career scenarios, and other real-life contexts

Problems Grounded in Real-World Context

Math with a Calculator

4. A website-hosting service charges businesses a onetime setup fee of \$350 plus d dollars for each month. If a business owner paid \$1,010 for the first 12 months, including the setup fee, what is the value of d ?

- A. 25
- B. 35
- C. 45
- D. 55

U.S. Founding Documents and the Great Global Conversation



The redesigned SAT includes one of the following:

- ▶ An excerpt from one of the Foundation Documents
- ▶ A text from the ongoing Great Global Conversation about freedom, justice, and human dignity

No prior knowledge of the text is required.

U.S. Founding Documents and the Great Global Conversation

Passage 1 is adapted from Abraham Lincoln, “Address to the Young Men’s Lyceum of Springfield, Illinois.” Originally delivered in 1838.

Passage 2 is from Henry David Thoreau, “Resistance to Civil Government.” Originally published in 1849.

Passage 1

Let every American, every lover of liberty, every well wisher to his posterity, swear by the blood of the Revolution, never to violate in the least particular, the laws of the country; and never to tolerate their violation by others.

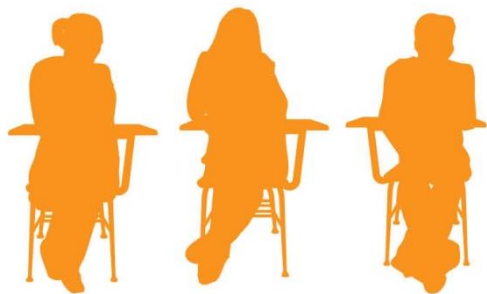
Passage 2

Unjust laws exist; shall we be content to obey them, or shall we endeavor to amend them, and obey them until we have succeeded, or shall we transgress them at once?

PSAT™ 8/9

Serves as the foundation for understanding students' progress as they enter high school

Who should take PSAT 8/9?



All 8th- and 9th-graders

PSAT™ 10 & PSAT/NMSQT®

PSAT 10

PSAT/NMSQT

Test



Administration



Students



No

National Merit Qualifier



Yes

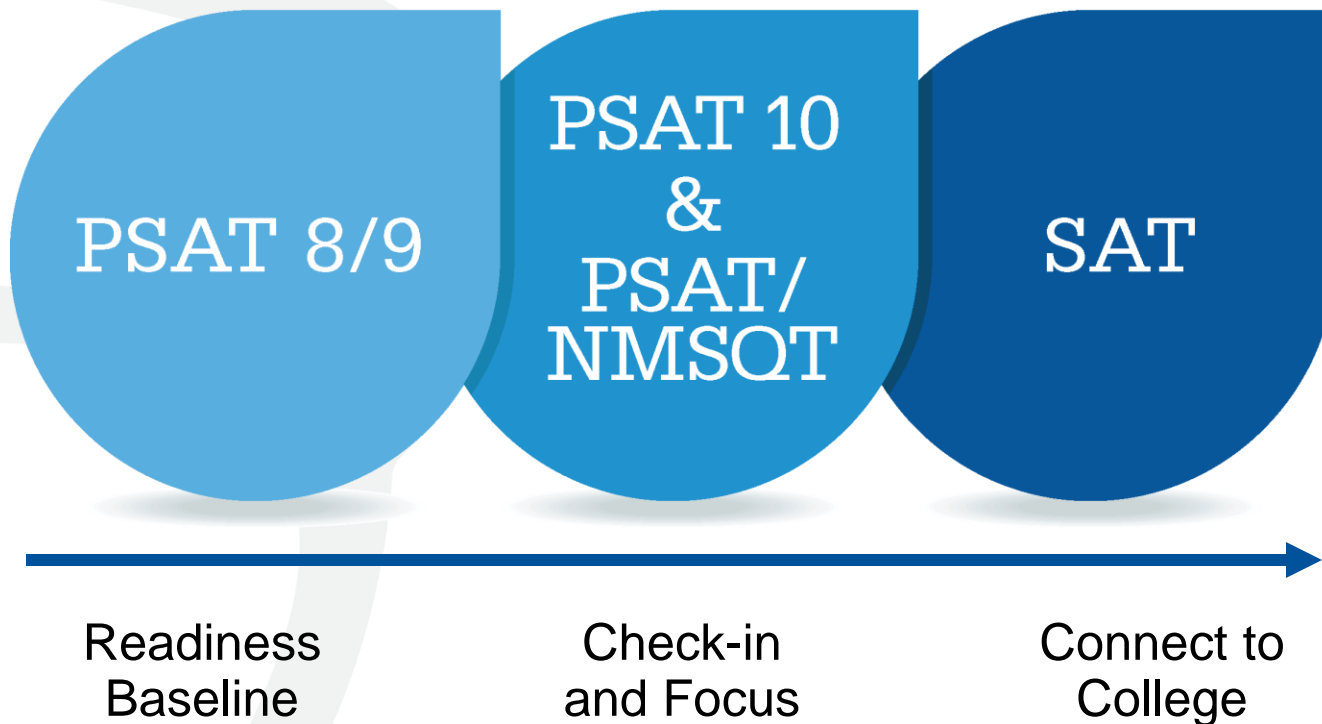
Comparison of ACT & SAT

Testing Time	ACT 2 hrs 55 minutes + essay (40 min)	SAT 3 hours + essay (50 min)
Structure	4 tests + optional writing	3 tests + optional SAT essay
Score Range	Composite 1 – 36	Composite 400 – 1600
Reading Test	40 questions (35 min.)	52 questions (65 min.)
English/Writing and Language Test	75 questions (45 min.)	44 questions (35 min.)
Math Test	60 questions (60 min.)	58 questions (80 min.)
Science Test	60 questions (60 min.)	N/A
Total questions/time	215 questions (0:49/question)	154 questions (1:10/question)

Illinois Standard Alignment

- ▶ SAT was chosen as the Illinois state entrance exam in large part due to its standard alignment to the Illinois State Standards
- ▶ *“ISBE said it weighed the attributes of both exams and decided the SAT was better aligned with standards for what students should know in Illinois.”* **Chicago Tribune, 2016.**
- ▶ **The Redesigned SAT is aligned to:**
 - ▶ Reading and Language Anchor Standards
 - ▶ ELA/Literacy Standards
 - ▶ Literacy in History/Social Studies, Science, and Technical Subjects
 - ▶ Standards for Informational Text
 - ▶ Illinois Standards for High School Mathematics
 - ▶ Illinois Standards for Mathematical Practice

The SAT[®] Suite of Assessments



A large, stylized, light blue acorn graphic is positioned on the left side of the page, partially overlapping the title area. It features a curved, leaf-like shape at the top and a long, tapering stem that curves downwards.

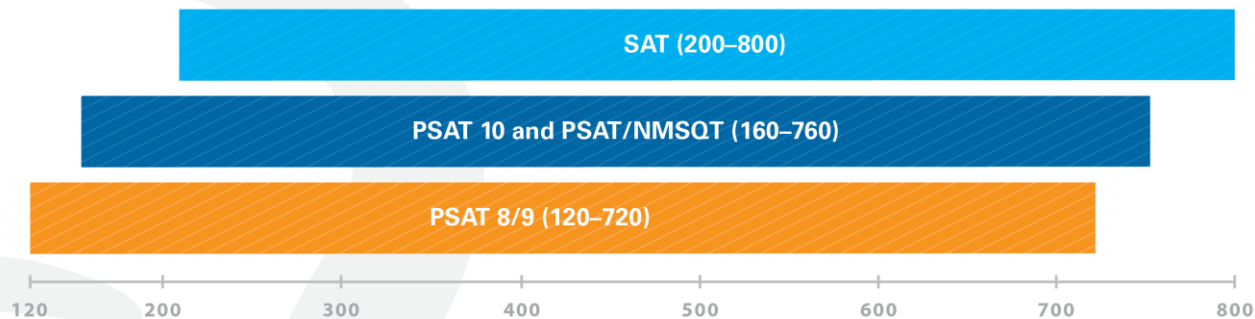
Scores and Benchmarks

SAT® Scores and Subscores

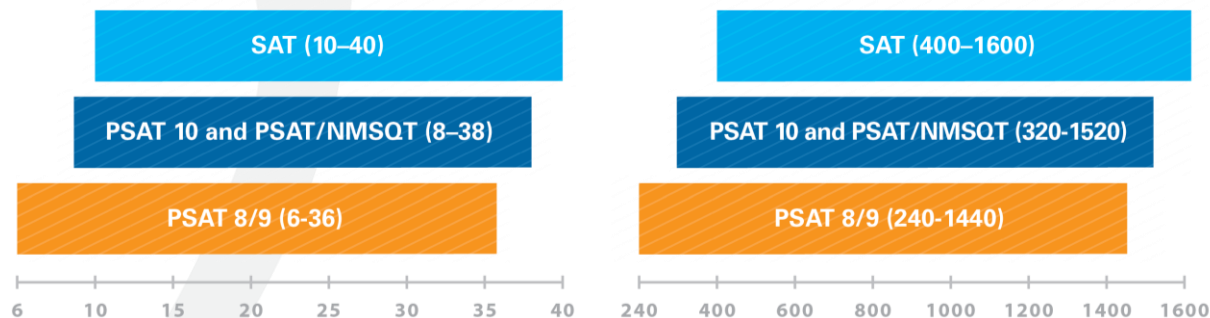


Longitudinal Progress Monitoring

Section Scores are placed on a vertical scale.



The same concept holds true for the **Test, Cross-Test Scores** and **Total Score**.

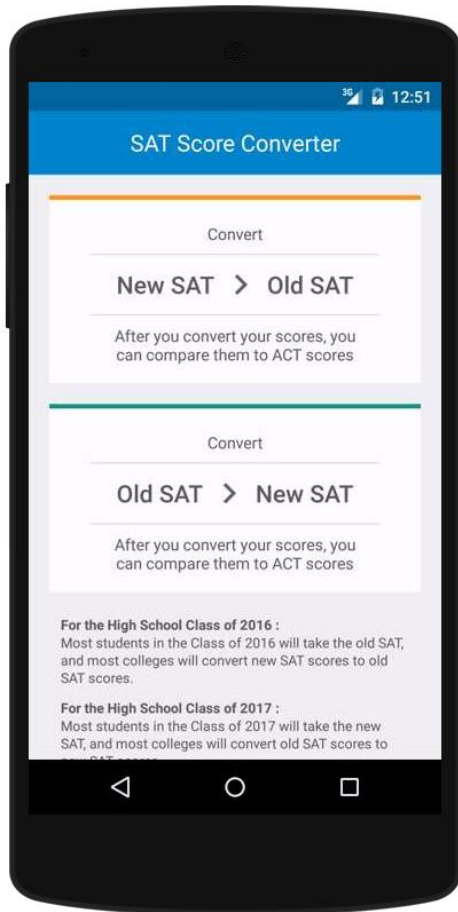


SAT College and Career Readiness Benchmarks

- 75% likelihood of a student achieving at least a “C” grade in a first-semester, credit-bearing college course in a related subject
- Set at Section Level
- “Backcast” Grade-Level Benchmarks:

	Grade 8	Grade 9	Grade 10	Grade 11	SAT	
Section-level	390	410	430	460	480	ERW
	430	450	480	510	530	MATH

SAT[®] Score Converter



Smartphone App

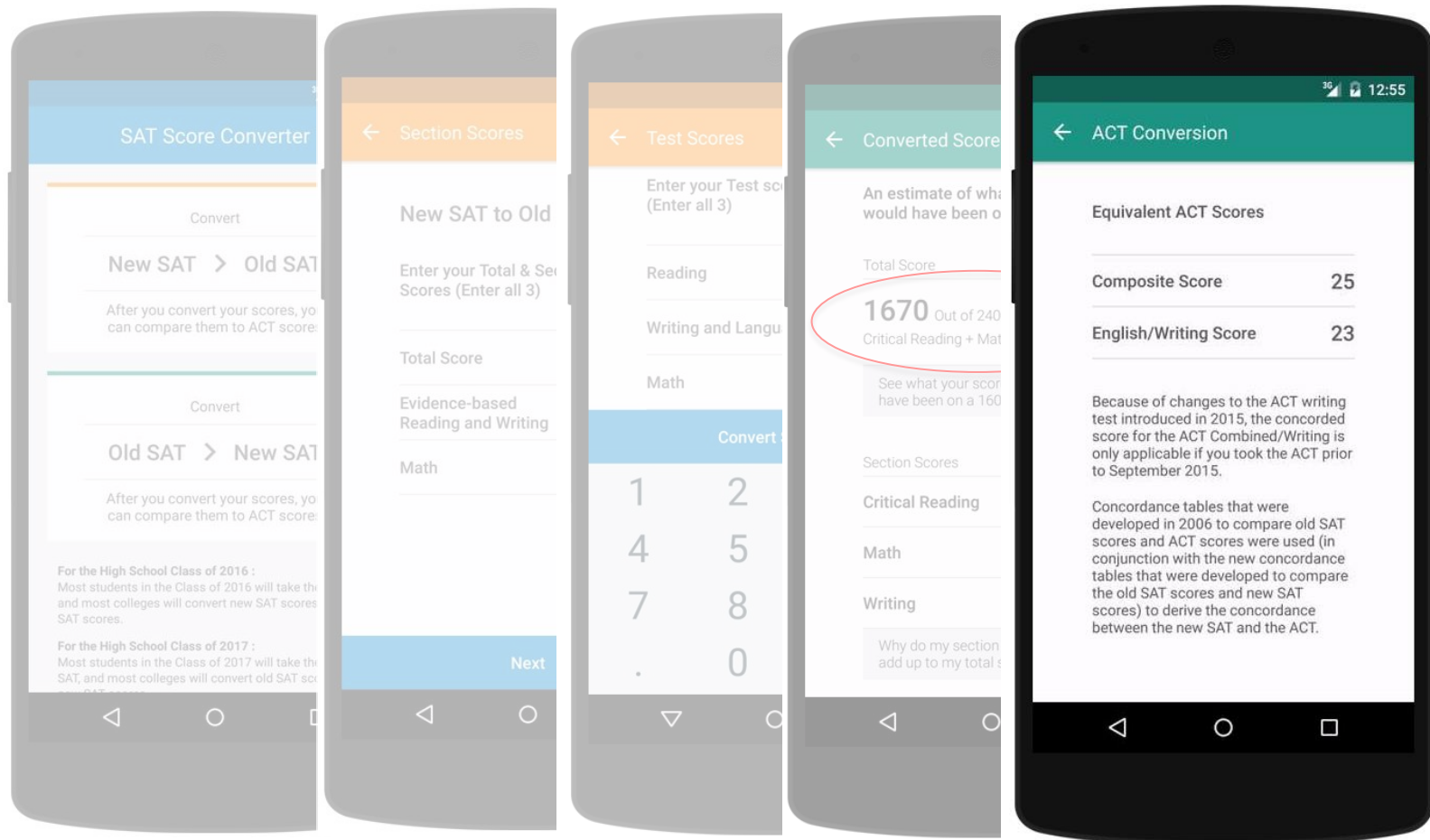
Easily convert old SAT scores to new, and vice-versa.

Download the app by searching for **SAT Score Converter** on Google Play or the App Store.

Web

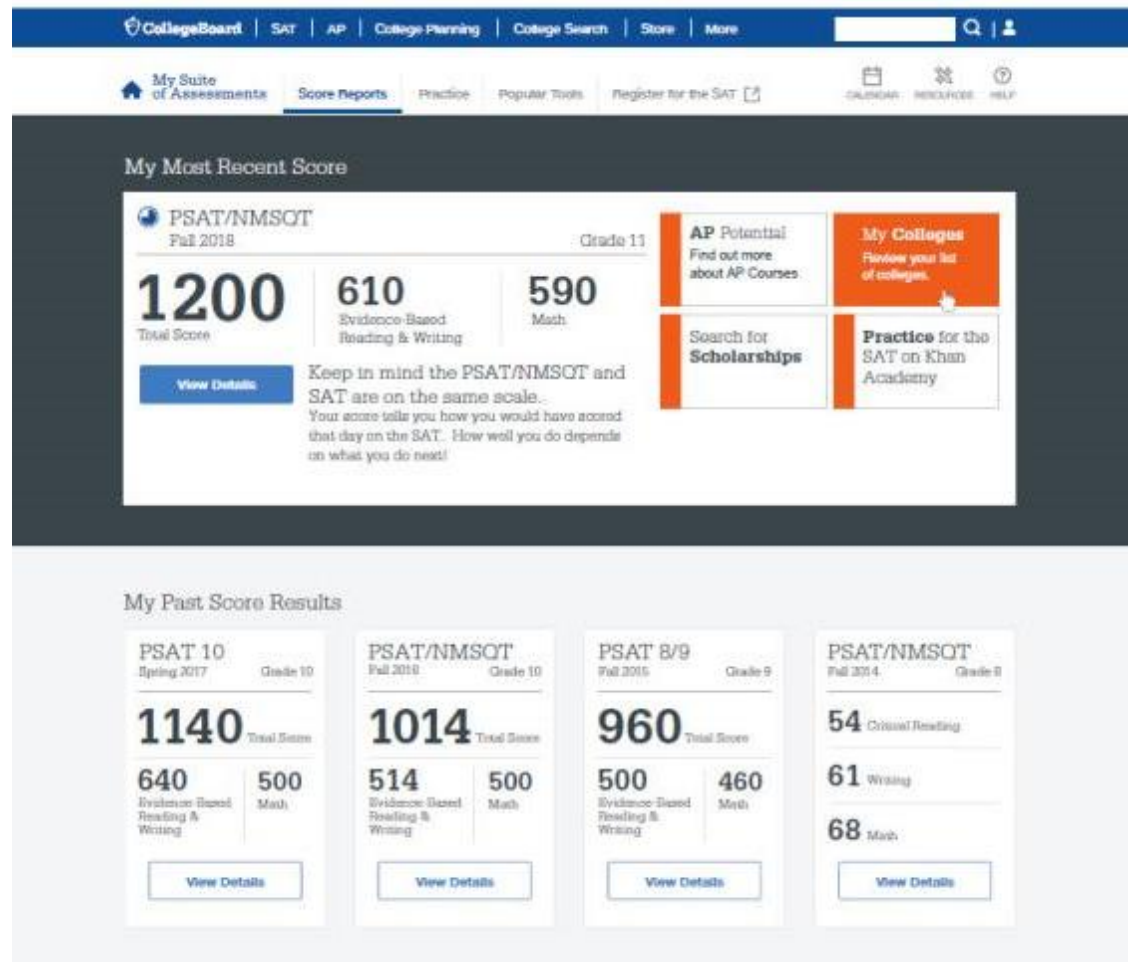
Provides the same functionality as the app, letting you make score-to-score conversions. To access the web-based tool, visit sat.org/score-converter.

How does the app work?



Student Reports - Dashboard

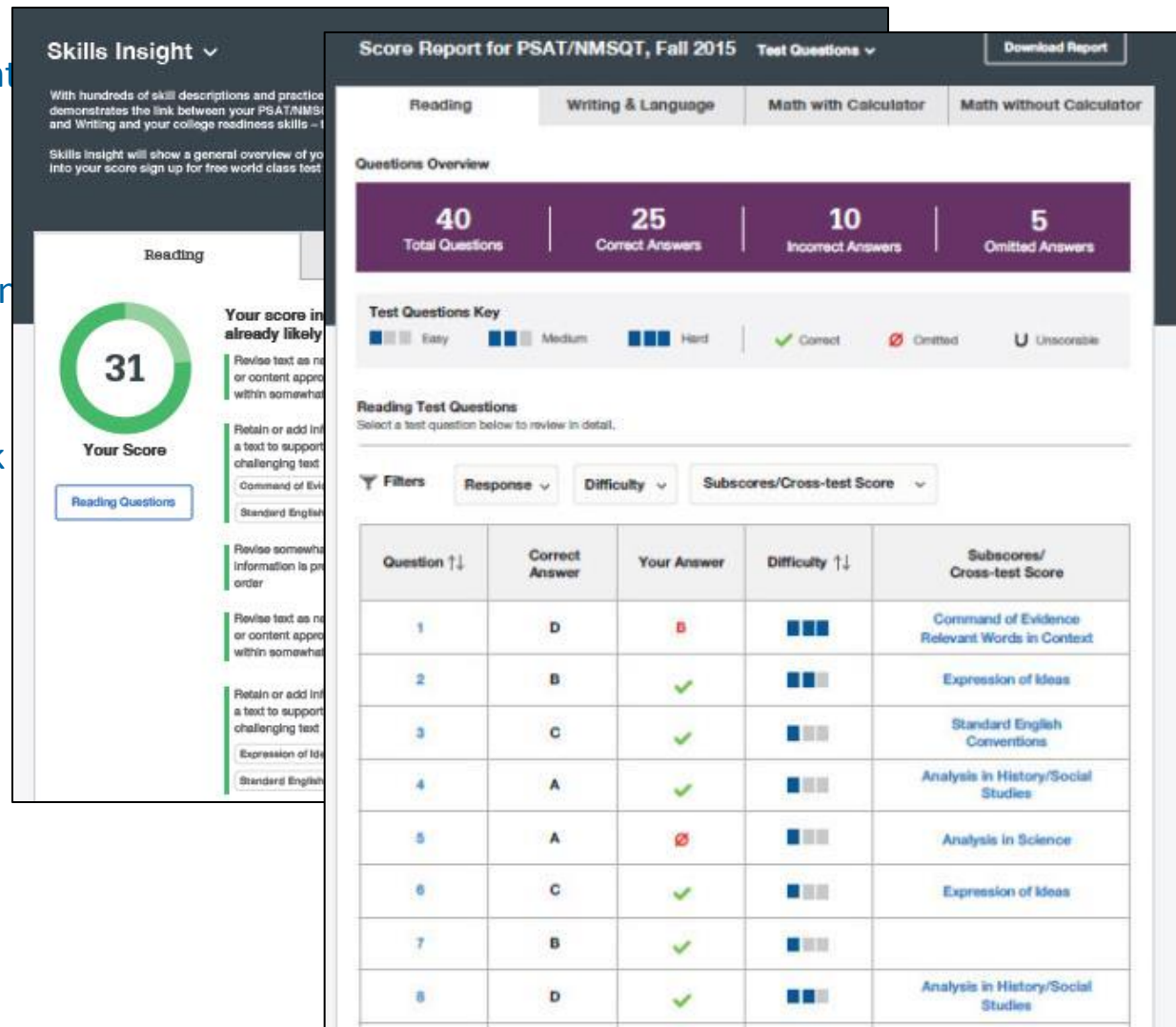
- ▶ Consolidated view of all assessment scores
- ▶ Brief overview of each assessment including grade and year taken plus top level section scores
- ▶ Includes pre-2015 PSAT/NMSQT scores
 - ▶ 'Report Details' less detailed for pre-2015 PSAT/NMSQT



NOTE: All reports are subject to change and should not be considered final.

Improved Skills Insight and Question Analysis

- ▶ Detailed explanation of current college readiness skills, based on test score band and typical students
- ▶ Actionable steps to improve on skills required to be college ready
- ▶ Question-level detail feedback including answer*, difficulty and subscore
- ▶ Quickly filter results



Student Reports – Report Detail

- ▶ Projected score ranges on next assessment
- ▶ Percentile rankings
- ▶ Tallies of correct and incorrect answers



NOTE: All reports are subject to change and should not be considered final.

 CollegeBoard +  KHANACADEMY + YOU

Official SAT[®] Practice

Sign up for free at
satpractice.org

Khan Academy Overview

- + The College Board and Khan Academy have partnered to provide online SAT® test preparation programs and resources entirely free of charge.
- + Features include:
 - + Thousands of practice problems
 - + Personalized tutorials on test content
 - + Official SAT practice questions and full-length tests
 - + Comprehensive reporting for students
 - + Access anytime, anywhere — for free
- + We are working with educators, community groups, college access organizations, and parents to provide the necessary resources to propel students to college success.



Why Link Accounts?

1

Create Personalized Practice
Through Khan Academy

2

Ensure Future Scores Are Included
For Enhanced Personalization

3

Jump Right Into Customized Practice

Steps to Link College Board and Khan Academy Accounts

Log into Khan Academy account

When prompted, agree to link accounts

Sign in to College Board account

When prompted, click “send” to authorize

Start Official SAT Practice through Khan Academy

Practice for the SAT

8 Diagnostic Quizzes in Khan Academy

- Individualized Practice plan

PSAT-related assessment

- Individualized Practice plan

Full-length SAT Practice Test (6)

- Individualized Practice plan

Khan Academy

← → ↻ <https://www.khanacademy.org/mission/sat/practice/math> 🔍 ☆ 🌙 📱
Apps SF EPL SharePoint CR Fall Enrollment C Concur myboard DuckDuckGo SiriusXM M-W AG DH CCU MAP KA YouTube Educator Score R K12 Assessment Cisco WebEx

Next step in your "Getting started" coach checklist:

Add students to your class

Subjects ▾ 🔍

 KHANACADEMY

Asa Gordon

Official SAT® Practice

Dashboard

Practice

Tips and Planning

Full Tests

In partnership with  CollegeBoard

MATH

READING & WRITING

Complete these 4 quizzes to unlock your personalized Math practice



DIAGNOSTIC QUIZ

Quiz 1 — Math (No Calculator)

Take this quiz



Quiz 1 — Math (No Calculator)



Quiz 2 — Math (No Calculator)



Quiz 3 — Math (Calculator OK)



Quiz 4 — Math (Calculator OK)

MATH

READING & WRITING

Your Math practice recommendations

OVERALL
Math

LAST MISSED ON YOUR PSAT

Linear equation word problems

Level 3 questions completed: 0 of 27

Practice this skill

Linear equation
word problemsLinear inequality
word problemsGraphing linear
equations15
min
TIMED MINI-SECTION
Math (Calculator OK)

Practice for the SAT

8 Diagnostic Quizzes in Khan Academy

- Individualized Practice plan

PSAT-related assessment

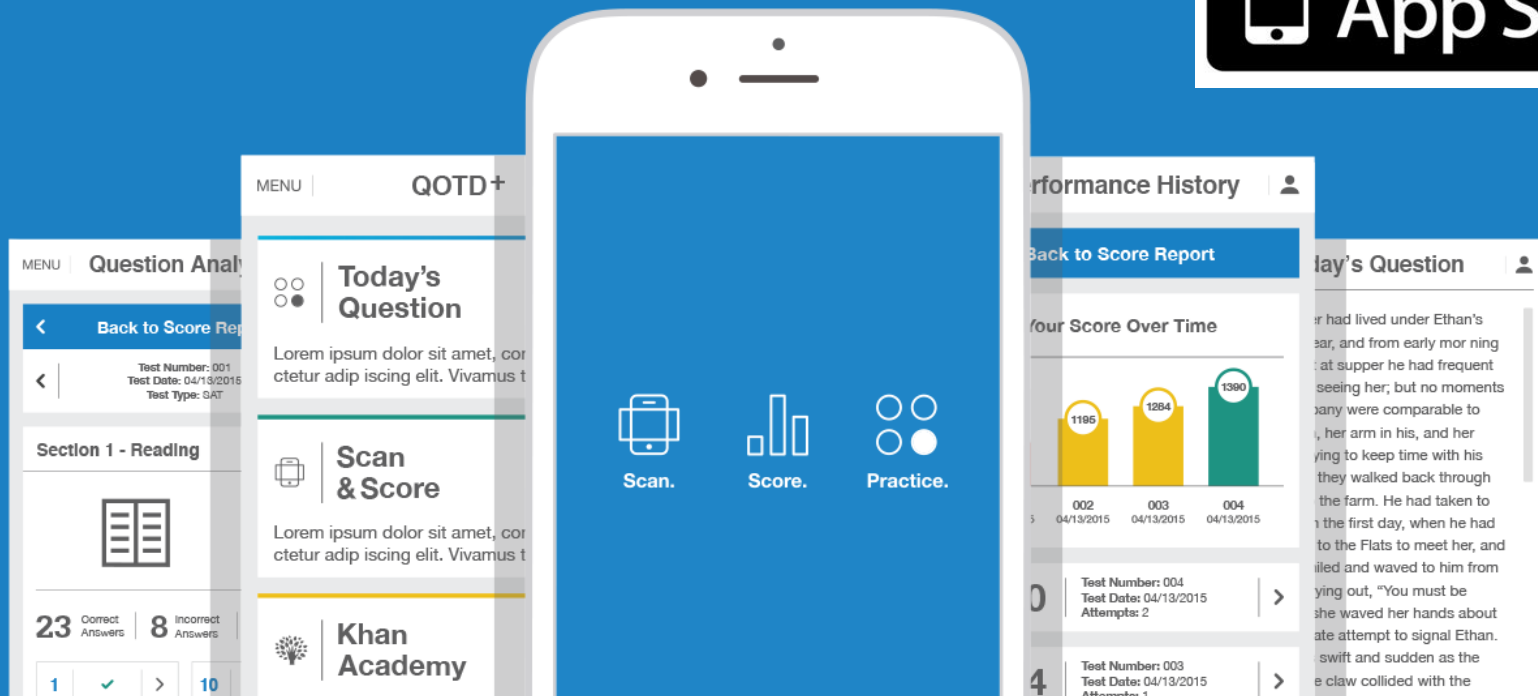
- Individualized Practice plan

Full-length SAT Practice Test (6)

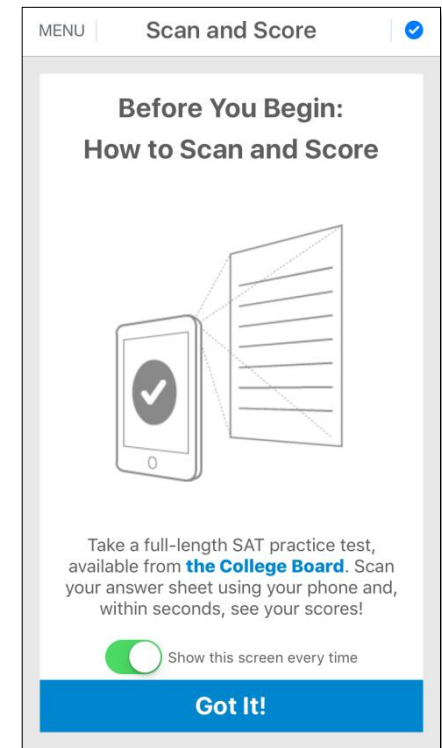
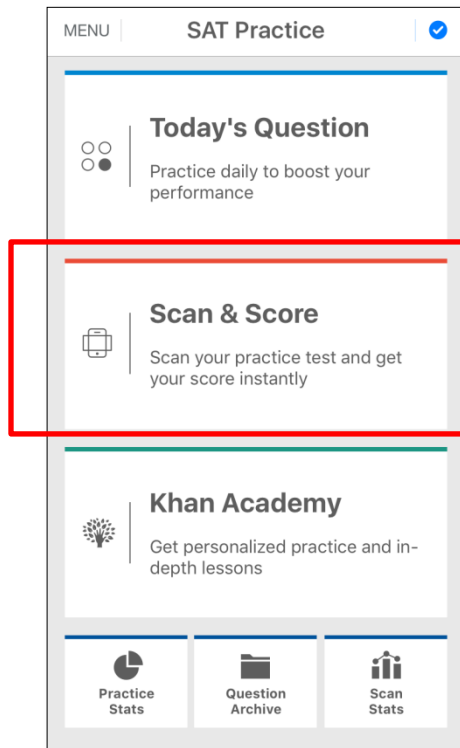
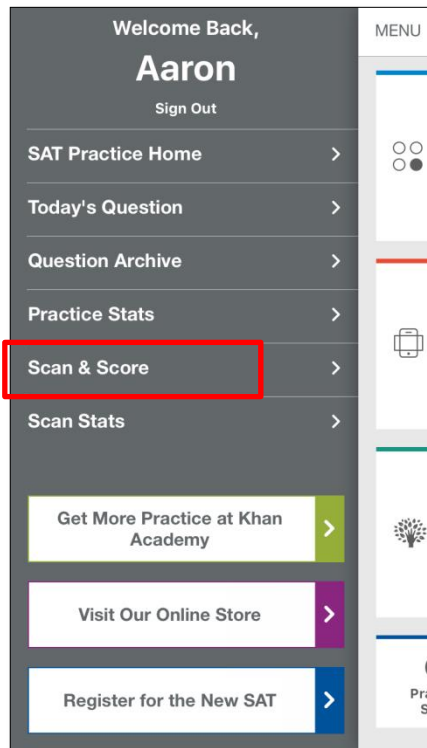
- Individualized Practice plan

Daily Practice for the New SAT®

- » Daily SAT practice questions
- » Instant practice test scoring



Click Scan & Score from the Home screen or Menu



Practice Tests and Answer Sheets:
<http://sat.org/scoring>

Step 4: Scan your grid on a dark non-reflective surface

MENU

Scan and Score

In a well-lit area, flatten and place your answer sheet on a dark, non-reflective surface. Make sure all corners of the page are within the scan.

Scan First Page

MENU


Scan and Score

1 of 4

Scan Next Page

Verify/correct omissions and double-bubbles

MENU | Scan and Score | ✓



We found a couple of potential problems with your scan

03 Omitted Questions

00 Multiple Answers

No thanks, skip it

View and fix errors

MENU | Verify Scan | ✓

Test Number: 1
Test Date: 9/27/2015
Test Type: PSAT/NMSQT

Section 1 - Question 19 Omitted

19 A B C D

(A) (B) (C) (D)

This question was omitted or did not correctly scan.
Choose an answer now or leave blank to omit this question.

Section 1 - Question 22 Omitted

22 A B C D

(A) (B) (C) (D)

This question was omitted or did not correctly scan.
Choose an answer now or leave blank to omit this question.

Section 2 - Question 13 Omitted

13 A B C D

Score Test

Immediately view your scores and detailed analysis and answer explanations

MENU | Score Summary | ✓

Test Number: 1
 Test Date: 9/27/2015
 Test Type: PSAT/NMSQT

Your Total Score
770 | 320 to 1520

Your Evidence-Based Reading and Writing Score
330 | 160 to 760

Your Math Score
440 | 160 to 760

MENU | Question Analysis | ✓

[Back To Score Report](#)

Test Number: 1
 Test Date: 9/27/2015
 Test Type: PSAT/NMSQT

Reading

13	Correct Answers	34	Incorrect Answers	0	Omitted Answers
----	-----------------	----	-------------------	---	-----------------

1	✗	➤
2	✗	➤
3	✓	➤
4	✗	➤

MENU | Question Detail | ✓

[Back To Question Analysis](#)

Test Number: 1
 Test Date: 9/27/2015
 Test Type: PSAT/NMSQT

Math: Question 6
 $2x^2 + 7x - 15 = 0$

If r and s are two solutions of the equation above and $r > s$, which of the following is the value of $r - s$?

[Hide Answer and Explanation](#)

A $\frac{15}{2}$

B $\frac{13}{2}$

C $\frac{11}{2}$

PSAT/NMSQT results: linking with Khan Academy for personalized practice recommendations

Expanded Scholarship Opportunities



Sending Scores

Four free reports are included with SAT[®] registration.

Students can use their free reports up to 9 days after their test date.

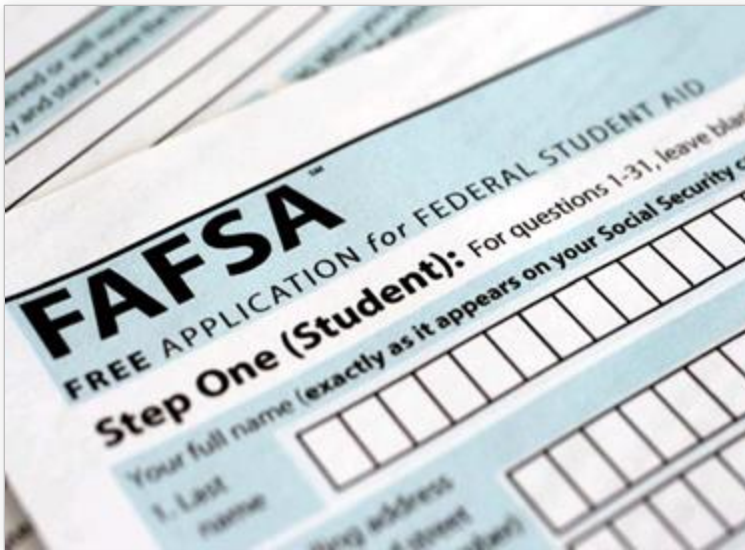
Score Choice[™]
enables students to:

- ▶ **Choose** which scores to send to colleges by test administration.
- ▶ **Send** only the scores they want to send^{*} to colleges.

The screenshot shows the CollegeBoard Student Score Reporting interface. At the top, there is a blue header with the CollegeBoard logo and 'Student Score Reporting' text, and a 'Login' link with a user icon. Below the header, the main section is titled 'My Score Reports'. On the left, there is a 'Sign In' form with fields for 'Username' and 'Password', a 'Sign In' button, and links for 'Forgot your username or password?' and 'Don't have an account? Sign Up'. On the right, there is a text block titled 'Access your SAT Suite of Assessment scores with personalized feedback, practice, college planning and career exploration resources.' followed by a bulleted list of benefits: 'See all your scores and if you are on track for college readiness', 'Detailed explanations of skills required to be college ready', 'Send your scores to Khan Academy[®] for personalized practice recommendations', 'Search for colleges that fit your needs', 'Start on your scholarship and college financial aid plan', 'Take a personality test to find majors and careers fit for you', and 'Get feedback on your readiness for AP courses'.

* Students will need to comply with an institution's stated score-use practice. Score Choice is optional. Student scores will not be released without the student's specific consent.

2017-18 FAFSA



Upcoming Changes

1. Earlier FAFSA Launch
 - ▶ FAFSA available **Oct 1, 2016**, at fafsa.gov.
2. Earlier Income Info Required
 - ▶ 2017-18 application will ask for **2015 income and tax information.**

For the latest U.S. Department of Education (DOE) information, visit financialaidtoolkit.ed.gov/fafsa-changes

