



REGIONAL
OFFICE OF EDUCATION
Champion our community.



Annual Report
July 1, 2022 - June 30, 2023

John Meixner, Regional Superintendent of Schools
Dave Demler, Asst. Regional Superintendent of Schools

The Office of Regional Superintendent

The Regional Superintendent of Schools is the chief administrative educational officer of an educational service region, and the only elected education professional office in Illinois. The Office of the Regional Superintendent performs regulatory functions as directed by the Illinois School Code.

The Code states that, "The Regional Superintendent of Schools:

- shall exercise supervision and control over all school districts in the county.
- shall act as the official advisor and assistant of the school officers and teachers in his region. In the performance of this duty he shall carry out the advice of the State Superintendent of Education."

In addition to coordinating and delivering state and local services, the Regional Superintendent acts as an advocate for education by providing positive leadership and disseminating information for educators, school districts and the community. The six main areas of responsibility include educational administration, cooperation management, financial, health and life safety, public relations, and transportation.

Special duties of the Regional Superintendent are stated in the School Code and can be summarized in two major areas: Service and Assurances to the Public. Service components are generally grouped as legislative, legal, cooperative management, research dissemination, educational administration and citizen representation. Assurances to the public include: fiscal responsibilities, local performance, life safety, certification, supervision and curriculum. In these areas, legislation places enforcement responsibilities on the Regional Superintendent to guarantee that certain minimums are met and legal parameters followed. In most instances, enforcement responsibilities become services to help schools and school personnel meet minimum expectation.

The Regional Superintendent also acts as an advocate for education by providing positive leadership and disseminating information for educators, school districts and the community. For a detailed list of responsibilities, please visit <https://www.roe26.net/>

ROE26 Snapshot



4 Counties Served
Fulton, Hancock, McDonough, and Schuyler

2 Offices
Canton and Macomb

67 ROE26 Employees

18 School Districts

75 Public School Administrators

888 Public School Teachers

10,856 Public School Students

3 Non-Public/Private Schools

3 Alternative School Sites



A Message from the Regional Superintendent

Dear Community Friends:

More than 200 years ago, Ben Franklin knew nothing about COVID-19 or worldwide pandemics. But he could not have been more right when he summed up these last few school years: “Out of adversity comes opportunity.”

Think of how far we have come in just one school year, as you review our 2022-2023 ROE26 report.



A year ago in this space, I told you all about adversity: changing bus routes and sports schedules, teacher shortages growing, truancy and other behavior problems increasing, debates over mask and vaccine mandates dominating our attention.

“It’s clear we know adversity,” I wrote then. “But we must not lose sight of opportunity in the process.”

“We put education first in schools throughout the region, and across the state.”

This school year, new challenges emerged in the post-pandemic era. Yet we put education first in schools throughout the region, and across the state. We have learned some important lessons.

How we provide education to our students has changed forever in some ways, often positive. Students are more resilient and flexible than they were in a pre-pandemic learning environment. Teachers always have had to be nimble, but now we all recognize we must embrace the chaos and turn it into a learning opportunity – for all of us.

I am so proud of the teams at each of our schools in ROE26 who come to class every day determined to turn adversity into opportunity. A shortage of bus drivers could create real headaches for rural families, but the principal jumps in personally to get them to and from the building. Throughout these report pages, you’ll see the results of selfless leadership and a determination to succeed that will last for generations to come.

We are ready to serve and support at ROE26. Please reach out if you have questions, concerns or great ideas to help shape these young lives into our next generation of leaders. Together, we will **champion our community** and make this next school year the best one yet.

Sincerely,

John Meixner

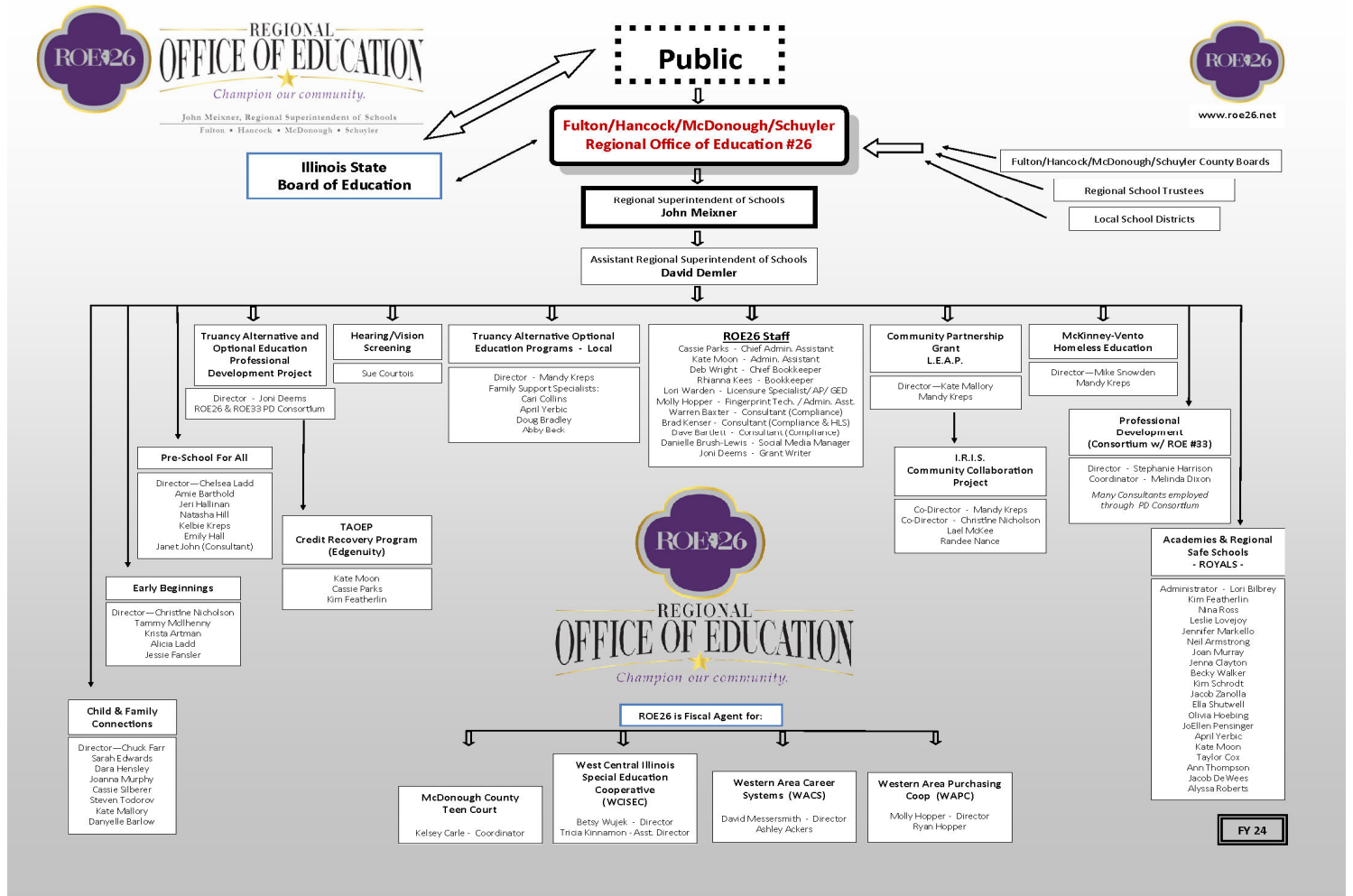
Regional Superintendent of Schools

Regional Office of Education #26

Legal Reference for Annual Report

This annual report is designed in part to meet the provisions of Chapter 105, Article 3, Sections 5/3-5, 5/3-6, and 5/3-15.8 of the School Code of Illinois.

Organizational Chart



Regional Board of School Trustees

The Regional Board of School Trustees is an elected body with the sole responsibility of action on detachment/annexation petitions regarding boundary changes between school districts in the region. The Regional Superintendent acts as Ex-Officio Secretary to the Board and maintains all records of petitions filed in the region. During the 2022-2023 school year meetings were held on October 3, 2022, April 3, 2023, and May 15, 2023.

Members of the Regional Board of School Trustees include:

Barbara Zimmerman, President
 Jim McCain, Vice President
 Sally Bair
 Gerald Walker
 Francis "Kip" Wilson
 John Marshall
 Vacancy

McDonough County
 McDonough County
 Fulton County
 Hancock County
 Schuyler County
 Fulton County

Term expires 2027
 Term expires 2027
 Term expires 2025
 Term expires 2029
 Term expires 2029
 Term expires 2025

We want to thank Pam Vancil, who retired this year, for her time and service to our area.

You can email the members of the ROE26 Regional Board of School Trustees at trustees@roe26.net.

Champion Our Community



Champion our community is a commitment from ROE26 to advocate and support our schools and our communities. By getting involved and setting an example, we hope to encourage students to campaign and promote their communities to others as great places in which to live and grow. We need young people committed to our region, and a great way to do that is to make sure they are surrounded by people who champion our community.

Board and Committee Memberships

Camp Big Sky Board Member and Volunteer
Canton Church of the Brethren Treasurer
Early Beginnings Chair and Advisory Board Member
IARSS Treasurer and Area 3 Treasurer
IARSS Chair of Educator Shortage Survey Committee
IARSS Legislative Committee Member
Illinois Coalition of Educators for At Risk Youth (ICEARY) Region Chairperson and board members
IRIS Community Collaboration Chair and Advisory Board Member
L.E.A.P. Program Advisory Council Chair and Member
Loving Bottoms Diaper Bank Agency Partner
Macomb Area Chamber of Commerce Board Vice Chair, Government Affairs Committee Member, and Ambassador Chair
Macomb Community Shared Action Committee Member
Macomb Park Board Commissioner
McDonough County Interagency Council Chair
McDonough County CEO Program Administrative Agent
McDonough County Quality of Life Committee Vice-Chair and Youth Task Force Member
McDonough County Teen Court Treasurer & Board Member
Mississippi River Valley Parents as Teachers Council Committee Member
One Human Family Committee Member
Performing Arts Society (WIU/ Macomb) Board Member
Prairie Hill Nature Conservancy Loan Committee Member
Recovery Orientating Systems of Care (ROSC) Advisory Board Member
Secretary of the McDonough County Youth Task Force
VFW/American Legion Funeral Honors Detail
Western Illinois Region Illinois Principals Association State Director
Western Illinois University Alumni Council Board Member
WIU College of Education and Human Services (COEHS) Advisory Board Member
WIU Social Work Department Advisory Board Member
Workforce Innovation Board of Western IL Board Member

ROE26 State and Local Programs

Adult Education and High School Equivalency/GED

ROE26 offers an Adult Education Program designed for non-traditional students age 17 and above to achieve their High School Equivalency (HSE) certificate and beyond. Qualified staff are trained to assist students through connecting with local agencies and services, creating a transition plan for college, training or career readiness, and bridging the gap between student and services within the workforce area. ROE26 is able to offer this program through a partnership with ROE 33 Regional Alternative Education Services.

In addition to the Adult Education program, ROE26 offers High School Equivalency/GED testing at the Business Office in Canton and through the Spoon River College Outreach Center. In FY23, **220** tests were given, with **44** testers completing all the sections of the test the first time. **Twenty-seven** testers passed all the sections of the test.

220 Tests Given
27 Passed All Sections



Background Checks and Fingerprinting



ROE26 is a state of Illinois licensed LiveScan fingerprint and background check vendor and is able to conduct a background check and/or fingerprinting for any Illinois school district or agency that requires a State and FBI criminal background check. The Illinois School Code requires background checks for school staff, including substitute teaching staff that work in multiple school districts. In FY23, ROE26 conducted **1,101** background checks.

Bus Driver Training

Regional Office of Education #26 is responsible for keeping students safe to and from school by conducting an eight hour Initial Permit training required for all new school bus drivers. A two-hour Refresher course is required every year for those who have already been on the roads prior to renewing their school bus permit. This year, **12** Initial Bus Driver trainings and **14** Refresher trainings were offered to bus drivers in our area, with **76** bus drivers completing the Initial course and **263** participating in the Refresher course.



Child and Family Connections #13



Child and Family Connections (CFC) #13 is funded by the Department of Human Services under the Regional Office of Education #26, serving Fulton, Hancock, Henderson, Knox, McDonough, Mercer, Rock Island, Schuyler, and Warren Counties. It is an early intervention program that serves infants and children ages 0-3 who have or are at risk of developmental delays.

They assist in identifying, planning, and providing services for children in need of care through in-home evaluations and therapy sessions. They also monitor children's adaptive, cognitive, communicative, physical, and emotional progress with 6 month check-ups. During the 2022-2023 school year, Child and Family Connections #13 served over **433** children and their families.

433 Children and Families Served



ROE26 State and Local Programs

Compliance and Health/Life Safety

ROE26 inspects each of the 18 public school and school-related buildings in our area annually to ensure they meet minimum health and safety standards under state law. When schools remodel, build new buildings, or use temporary classroom units, ROE26 ensures they are safe for students and teachers. This year, **18** inspections were conducted, more than **55** Health/Life Safety Plans were processed and reviewed, and **18** Health/Life Safety funds were approved. Inspection results are available through the office.



18 Inspections
55 Plans Approved

Schools also work with ROE26 to ensure they are compliant with state and federal guidelines/standards. Our systematic review results are part of the Illinois Report Card, and they serve to improve operations and support top-quality programs for student educational experiences. During the 2022-2023 school year, Bushnell-Prairie City CUSD #170, Macomb CUSD #185, Illini West CUSD #307, Canton Union School District #66, and Lewistown CUSD #97 were evaluated for Full Compliance. All other districts participated in Partial Compliance Reviews.

Early Beginnings



Early Beginnings provides eligible families the information, support, and encouragement they need to help their children develop to their full potential prenatally to age 3. A variety of services are provided to families including health, vision, hearing, social-emotional and developmental screenings, childbirth education, infant massage, infant sign language, a children's and parenting book lending library, preschool transition plans, play to learn group programs, and the *Parents as Teachers* personal visit program.

Parent Educators are certified using the *Parents as Teachers Program* model and Foundational Curriculum. The program is housed at the new ROE26 Family Resource Center. Families are supported through in person and virtual visits by phone and video. **Eighty-four** children in **68** families were served this year, with **711** personal visits, **16** group activities, **61** resource connections, and **135** developmental screenings.




84 Children in 68 Families Served
711 Personal Visits
135 Screenings

Program services also include *Cooperative Parenting through Separation or Divorce* workshops for all parents who want to make positive changes that shield their children from parental conflict and the risk factors that influence the child's post-divorce/separation adjustment. In FY23, there were **14** graduates of this program.

Homeless Education

The Area 3 Lead Liaison Project provides professional development, technical assistance, information, and coordination of services for west central Illinois school districts regarding the rights and needs of homeless children and youth. In our four county area, **364** PK-12 homeless youth were served this year. In Area 3, **2,602** students and pre-schoolers were helped by the program.



2,602 PK-12 Students served in Area 3
364 Youth served in ROE26

Through both the McKinney-Vento Homeless Grant and the American Rescue Plan Grant, the Homeless program has provided the area homeless youth with temporary housing, transportation for school, school supplies, clothing for school, health services, health and hygiene supplies, before and after school tutoring, as well as support in connecting with other local agencies to receive food and housing assistance, government documents, school records, and other assistance as needed.

ROE26 State and Local Programs

IRIS Community Collaboration



The ROE26 IRIS Community Collaboration started in January 2023 when they were one of nine organizations in Illinois to receive the Birth to Five Illinois Planning Grant. IRIS (Integrated Referral and Intake System) provides the ROE26 region with a community-led, online, bi-directional referral tool that streamlines communications between community providers offering services to individuals and families while working to increase the enrollment and retention in early childhood education and care programs.

By early March, the collaboration had invited community partners to plan the implementation of the IRIS software. They developed the mission, built community standards, outlined the referral form, identified key stakeholders and distributed information to social service agencies throughout the region. The software launched June 26, 2023, with **58** partnering programs. Since launch, there have been **12** referrals made using the system and that number is growing daily. In FY24, the IRIS Community Collaboration will continue its work towards growing the community partners and programs, as well as on boarding all local school districts.

58 Partners
12 Referrals since launch

L.E.A.P. (Leading, Educating, and Partnering) Community Program

The L.E.A.P. (Leading, Educating and Partnering) community program provides year-round social-emotional training, coaching and support to our students, their families, schools and communities through a trauma- responsive lens. Intensive support is provided to students in truancy and experiencing homelessness. The total number of trainings and events held in FY23 was **119**, with **1,532** total participants attending the trainings offered. Through a partnership with Early Beginnings, L.E.A.P offered Parent Cafés throughout the year, bringing together groups of parents to learn from each other, discuss parenting, and gain knowledge from a parent educator.

L.E.A.P.
Leading Educating And Partnering

119 Trainings
1,532 Participants

Licensure

ROE26 serves area teachers and administrators with all aspects of their licensure needs. The office provides assistance with license applications, renewals and registrations, adding endorsements and improvements on existing licenses, and utilizing the Educator Licensure Information System (ELIS). In FY23, ROE26 performed **120** Administrator Certificate and **250** Teacher Licensure Consultations. The office also administered **20** Paraprofessional tests.

120 Administrator Consultations
250 Teacher Licensure Consultations
20 Paraprofessional Tests Administered

Preschool for All



The Preschool for All program is a high quality program that brings together qualified staff, a proven curriculum and parent involvement to help children aged 3-5 develop the skills they need to succeed in school and later in life. Preschool for All programs are offered in participating public and private schools, child care centers, community and faith-based organizations, Head Start and other settings. There is no cost to parents.

ROE26 partners with Catch-A-Star Learning Center, YMCA Community Child Care Center, and PACT Head Start in McDonough County, as well as Hamilton School District #328, and Warsaw School District #316 in Hancock County to provide half-day *Preschool for All* classes. During the 2022-2023 school year, **152** children were served.

152 Children Served

ROE26 State and Local Programs

Professional Development

The ROE26 and ROE33 Professional Development Consortium is a provider of high quality professional development throughout the region. It provides trainings, conferences, networking opportunities, and assistance for continuous school improvement. During the past school year, the Consortium help **178** workshops and trainings, with a total of **4,045** participants. Sixty District-level or School-only trainings were held with a total of **1,830** participants in attendance. **Ten** Administrator Academies were offered with a total of **30** participants.



- 178** Workshops/Trainings
- 60** District-Level Trainings
- 10** Administrative Academies

Project Stay In/Truancy

The goal of the Truancy Intervention Program, or Project Stay In, is to serve K-12 students by providing early assessment, intervention, and remediation of the factors related to Chronic Truancy, which is any student who is absent without valid cause 5% of the previous 180 school days, or 9 days. Project Stay In is focused on keeping students in school and provides aid to students and their families in re-establishing regular attendance, normal school habits, and academic success. In the 2022-2023 school year, **482** referrals were made to Project Stay In.

**482** Referrals

ROYALS—Regional Office Youth Alternative Learning Services




ROYALS offers alternative learning services to students in grades 6-12 and provides a safe environment in which high-quality education is delivered and high-quality learning takes place. ROYALS takes an individual approach to developing a meaningful relationship with each student to help each student progress toward their goals.

ROYALS consists of three different sites: Canton, Carthage, and Macomb, with an Academy and Safe School at each site. The Safe School program serves students who have been expelled or who have served multiple suspensions

due to serious and/or repeated misconduct. The Academy program is designed to serve students for a variety of purposes, including credit recovery and chronic truancy. In the first quarter, there were **53** total enrollments at all sites. In quarter 2, there were **76** students, **88** students in quarter 3, and **74** students in the last quarter of the school year.

With special consideration, a ROYALS student may utilize a Remote Learning Plan. The Illinois State Board of Education allows this only when the home district, student, family, and ROYALS all agree that the remote learning plan is the best way for a student to learn with individual attendance, behavior and academic progress taken into consideration. During the 2022-2023 school year, **28** students from 9 districts utilized this program.



- 53** Students in Q1/**76** Students in Q2
- 88** Students in Q3/**74** Students in Q4
- 28** Students in Remote Learning Program
- 48** Students in Summer School
- 32** High School Graduates

ROYALS and ROE26 provided a Remote Learning Summer School, which ran from May 30—June 30, 2023, for **48** students from 9 school districts. ROE26 staff was available to ROYALS students and non-ROYALS students who were enrolled in the summer school program.

Congratulations to the **32** students who worked hard to complete coursework requirements for graduation and received a diploma from their home school districts.


ROE26 State and Local Programs

Illinois Truants’ Alternative and Optional Education Program (TAOEP)

The TAOEP program offers modified instruction or other services to prevent students from dropping out of school. The project serves dropouts up to the age of 21 and potential dropouts, including truants, un-involved, unmotivated, and disaffected students.

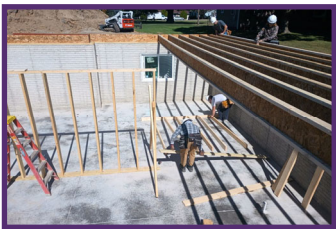
The goal of the TAOEP Professional Development Project, overseen by ROE26, is to provide a statewide system of professional development for educators who work with the TAOEP, as well as leadership and support to local programs. In FY23, 8 trainings were held with a total of 166 participants in the sessions.

8 Trainings
166 Participants
4,147 Students Utilized Edgenuity



In addition, ROE26 and ISBE oversee the statewide coordination of the Edgenuity online curriculum for all TAOEP and RSSP (Regional Safe School Program) students. In FY23, 2,771 students participated in Edgenuity through TAOEP and another 1,376 students participated through the Regional Safe School Program.

Western Area Career System (WACS)



Western Area Career System (WACS) is a non-profit *Education for Employment System* that provides a variety of services and benefits to 15 school districts in west central Illinois, including staff development, seamless transition to career technical programs by aligning career programs with community colleges including STEM (science, technology, engineering, and math) programs, and support services to special needs students.

Western Area Career System’s goal is to assist districts in providing high quality skill level programs to high school students to help them gain valuable employment opportunities and to introduce them to their career goals, leading to post secondary education.

Western Area Purchasing Coop (WAPC)

The Western Area Purchasing Coop (WAPC) combines the purchasing volume of 70 area schools and organizations to provide the leverage to achieve the lowest pricing on products. WAPC competitively seeks bids for copy paper, office supplies, paper specialty products, maintenance supplies and athletic supplies from vendors across the United States. The average savings on products is 20-30%.

Work Permits

The Illinois Department of Labor oversees the safety of minors in Illinois by regulating the employment of workers under 16 years of age. During the summer months, the Regional Office of Education is the Issuing Officer. In 2022-2023, ROE26 issued 37 work permits.

37 Work Permits Issued



Vision and Hearing Screenings

Vision and hearing screenings are performed once a year for all children in public and private schools in PreK, Kindergarten, 1st, 2nd, 3rd, and 8th grades, as well as any child with an IEP, new students, and teacher referrals. This year, 3,471 hearing and vision screenings were conducted in our four county area.

3,471 Screenings



Awards and Achievements

2023 REGIONAL AWARD WINNERS



AMY EVANS
Lincoln Elementary
Canton CUSD #66
ISBE Special Recognition
Educational Support
Personnel



THOSE WHO EXCEL & TEACHERS OF THE YEAR



CORRINE BISWELL
West Prairie High School
West Prairie CUSD #103
ISBE Meritorious Service
Teacher



ILLINOIS PRINCIPALS ASSOCIATION



JERRY BUTCHER
Bushnell Prairie City
High School
BPC CUSD #170
IPA Western Region
High School Principal
of the Year



NINA ROSS
ROYALS
ICEARY Region 3
Educator of Excellence

Illinois State Board of Education honored two teachers in their "Those Who Excel & Teachers of the Year" Awards. Horace Mann and the Illinois Principals Association honored one administrator, and ICEARY recognized a ROYALS teacher as an Educator of Excellence. ROE26 congratulates these leaders for their extraordinary contributions to education.

Nina Ross Recognized as Educator of Excellence at ICEARY



At the 2023 ICEARY (Illinois Coalition for Educating At-Risk Youth) Conference on March 2 and 3, Nina Ross, the Lead Teacher for ROYALS Canton, was recognized as an Educator of Excellence. She and three others were honored for their efforts to support students attending alternative education programs.

Thank you Nina for always working to create a sense of emotional safety, connection, and belonging for at-risk youth and families at ROYALS.

New Family Resource Center Opened this Spring



ROE26 hosted an Open House on May 4, 2023, to debut its new Family Resource Center in Macomb. On April 11, 2023, the Ambassador Committee of the Macomb Area Chamber of Commerce held a ribbon cutting ceremony for the center, which is designed as a one-stop shop for members of the Macomb community and surrounding region to access parenting support, education information and family resource referrals. The Center is open from 8am-4pm Monday through Friday, and houses the Early Beginning program and L.E.A.P. program.

Budget Information

Federal Funds

School Lunch/Breakfast Federal Reimbursement
Homeless-McKinney Vento Act—Local
McKinney Vento Area 3—Homeless
ARP—McKinney Vento Homeless
ARP—McKinney Vento Homeless LEA
ROE26—Community Partnership LEAP
Digital Equity II
ESSER III

Awarded for FY23 Programs

\$ 23,173.00
\$ 314,146.00
\$ 367,754.00
\$ 10,459.00
\$ 635,000.00
\$ 0.00
\$ 0.00

Received for FY23 and Balance of FY22

\$ 25,144.57
\$ 26,694.00
\$ 255,960.00
\$ 126,859.00
\$ 5,436.00
\$ 282,721.00
\$ 1,865.00
\$ 20,355.00
\$ 745,034.57

Total Federal Funds

State Funds

Child and Family Connections
ROE/ISC Services
Early Childhood—Early Beginnings
Early Childhood—Preschool for All
Regional Safe Schools Alternative Education
RWE—Cooperative Education Program
IRIS—Community Collaboration
School Bus Driver Classes Reimbursement
School Lunch—State Reimbursement
General State Aid/EBF
Truant Alternative/Option Ed. —Local
Truant Alternative/Option Ed. —PD
Fulton County School Facilities Tax
McDonough County School Facilities Tax
Schuyler County School Facilities Tax

Awarded for FY23 Programs

\$ 563,888.00
\$ 299,853.00
\$ 344,320.00
\$ 436,619.00
\$ 58,997.00
\$ 31,305.00
\$ 62,000.00
\$ 1,358.00

Received for FY23 and Balance of FY22

\$ 615,839.70
\$ 299,853.00
\$ 344,320.00
\$ 436,619.00
\$ 58,997.00
\$ 31,305.00
\$ 62,000.00
\$ 1,358.00
\$ 86.66
\$ 581,196.00
\$ 90,195.00
\$ 200,000.00
\$ 2,793,723.67
\$ 2,850,150.10
\$ 475,916.46
\$ 8,841,559.59

Total State Funds

Local Funds

Alternative School Tuition
County Support
Testing Services/GED and Parapro
Institute Funds

Awarded for FY23 Programs

\$ 105,430.00
\$ 255,111.01
\$ 4,920.00
\$ 33,900.00

Received

\$ 105,430.00
\$ 255,111.01
\$ 4,920.00
\$ 33,900.00

Total Local Funds

Total Funds Received

\$ 399,361.01
\$ 9,985,955.17

Institute Funds

Annual Institute Fund

Beginning Balance

\$ 45,595.33

Expenses

\$ 46,832.98

Received

\$ 33,900.00

Ending Balance

\$ 33,662.35

Fiscal Agent

McDonough County Teen Court
Western Area Purchasing Co-op
West Central Illinois Special Education Cooperative
Western Area Career System

Awarded for FY23 Programs

\$ 654,901.00
\$ 694,159.00

Received for FY23 and Balance of FY22

\$ 6,596.72
\$ 868,970.08
\$ 746,631.00
\$ 709,808.00

School Facility Sales Tax Distribution

Fulton County

Districts Receiving Funds	July	August	September	October	November	December	January	February	March	April	May	June	Total
Astoria #1	\$12,655.75	\$13,860.84	\$13,837.56	\$12,674.01	\$12,133.80	\$12,795.24	\$12,475.99	\$12,284.73	\$13,360.40	\$10,244.69	\$10,064.09	\$12,009.87	\$148,396.97
VIT #2	\$16,008.58	\$17,532.92	\$17,503.47	\$16,031.68	\$15,348.35	\$16,185.03	\$16,975.53	\$16,715.29	\$18,178.90	\$13,939.50	\$13,693.76	\$16,341.29	\$194,454.30
Fulton Co. #3	\$19,266.96	\$21,101.57	\$21,066.13	\$19,294.77	\$18,472.35	\$19,479.33	\$20,503.57	\$20,189.25	\$21,957.04	\$16,836.56	\$16,539.75	\$19,737.53	\$234,444.81
Spoon River Valley #4	\$10,200.16	\$11,171.42	\$11,152.66	\$10,214.88	\$9,779.48	\$10,312.58	\$11,146.58	\$10,975.70	\$11,936.75	\$9,153.04	\$8,991.68	\$10,730.13	\$125,765.06
Schuyler-Industry #5	\$47.22	\$51.72	\$51.63	\$47.29	\$45.28	\$47.74	\$0.00	\$0.00	\$0.00	\$0.00	\$0.00	\$0.00	\$290.88
Canton #66	\$104,693.27	\$114,662.21	\$114,469.63	\$104,844.36	\$100,375.50	\$105,847.22	\$110,034.13	\$108,347.28	\$117,834.30	\$90,354.82	\$88,761.93	\$105,923.09	\$1,266,147.74
Lewistown #97	\$28,380.99	\$31,083.44	\$31,031.23	\$28,421.95	\$27,210.50	\$28,693.81	\$31,650.15	\$31,164.95	\$33,893.79	\$25,989.61	\$25,531.43	\$30,467.65	\$353,519.50
Bushnell Prairie City #170	\$1,416.69	\$1,551.59	\$1,548.98	\$1,418.73	\$1,358.26	\$1,432.30	\$1,533.93	\$1,510.42	\$1,642.67	\$1,259.59	\$1,237.39	\$1,476.62	\$17,387.17
Abingdon-Avon #276	\$7,697.34	\$8,430.28	\$8,416.12	\$7,708.45	\$7,379.89	\$7,782.18	\$9,050.21	\$8,911.46	\$9,691.76	\$7,431.60	\$7,300.59	\$8,712.08	\$98,511.96
Farmington #265	\$26,019.84	\$28,497.46	\$28,449.60	\$26,057.39	\$24,946.73	\$26,306.64	\$28,070.97	\$27,640.64	\$30,060.89	\$23,050.56	\$22,644.19	\$27,022.20	\$318,767.11
Illini Bluffs #327	\$519.45	\$568.91	\$567.96	\$520.20	\$498.03	\$525.18	\$818.10	\$805.56	\$876.09	\$671.78	\$659.94	\$787.53	\$7,818.73
1% IDOR/ROE Admin Fee	\$2,315.37	\$2,535.84	\$2,531.58	\$2,318.71	\$2,219.88	\$2,340.89	\$2,472.03	\$2,434.14	\$2,647.27	\$2,029.92	\$1,994.13	\$2,379.68	\$28,219.44
	\$229,221.62	\$251,048.20	\$250,626.55	\$229,552.42	\$219,768.05	\$231,748.14	\$244,731.19	\$240,979.42	\$262,079.86	\$200,961.67	\$197,418.88	\$235,587.67	\$2,793,723.67

McDonough County

Districts Receiving Funds	July	August	September	October	November	December	January	February	March	April	May	June	Total
West Prairie #103	\$40,127.68	\$44,739.85	\$42,006.44	\$37,929.81	\$42,076.85	\$44,579.38	\$43,312.26	\$44,229.62	\$45,226.54	\$36,086.35	\$37,601.39	\$41,715.94	\$499,632.11
Bushnell Prairie City #170	\$40,615.35	\$45,283.56	\$42,516.94	\$38,390.76	\$42,588.20	\$45,121.14	\$45,587.99	\$46,553.55	\$47,602.85	\$37,982.41	\$39,577.06	\$43,907.80	\$515,727.61
Macomb #185	\$137,381.59	\$153,171.84	\$143,813.73	\$129,856.91	\$144,054.78	\$152,622.46	\$148,583.08	\$151,730.10	\$155,150.02	\$123,794.52	\$128,991.89	\$143,106.90	\$1,712,257.82
Schuyler-Industry #5	\$6,060.95	\$6,757.58	\$6,344.72	\$5,728.98	\$6,355.36	\$6,733.34	\$6,680.37	\$6,821.86	\$6,975.62	\$5,565.86	\$5,799.54	\$6,434.15	\$76,258.33
VIT #2	\$278.66	\$310.69	\$291.71	\$263.40	\$292.20	\$309.58	\$660.70	\$674.69	\$689.90	\$550.47	\$573.58	\$636.34	\$5,531.92
Southeastern #337	\$766.33	\$854.41	\$802.21	\$724.35	\$803.55	\$851.34	\$1,174.57	\$1,199.45	\$1,226.48	\$978.61	\$1,019.70	\$1,131.28	\$11,532.28
LaHarpe #347	\$0.00	\$0.00	\$0.00	\$0.00	\$0.00	\$0.00	\$73.41	\$74.97	\$76.66	\$61.16	\$63.73	\$70.70	\$420.63
Illini West #307	\$0.00	\$0.00	\$0.00	\$0.00	\$0.00	\$0.00	\$0.00	\$0.00	\$0.00	\$0.00	\$0.00	\$0.00	\$0.00
Carthage #317	\$0.00	\$0.00	\$0.00	\$0.00	\$0.00	\$0.00	\$0.00	\$0.00	\$0.00	\$0.00	\$0.00	\$0.00	\$0.00
Fulton County (Cuba) #3	\$0.00	\$0.00	\$0.00	\$0.00	\$0.00	\$0.00	\$0.00	\$0.00	\$0.00	\$0.00	\$0.00	\$0.00	\$0.00
Spoon River Valley #4	\$0.00	\$0.00	\$0.00	\$0.00	\$0.00	\$0.00	\$0.00	\$0.00	\$0.00	\$0.00	\$0.00	\$0.00	\$0.00
West Central #235	\$0.00	\$0.00	\$0.00	\$0.00	\$0.00	\$0.00	\$0.00	\$0.00	\$0.00	\$0.00	\$0.00	\$0.00	\$0.00
Monmouth Roseville #238	\$0.00	\$0.00	\$0.00	\$0.00	\$0.00	\$0.00	\$0.00	\$0.00	\$0.00	\$0.00	\$0.00	\$0.00	\$0.00
Abingdon-Avon #276	\$0.00	\$0.00	\$0.00	\$0.00	\$0.00	\$0.00	\$0.00	\$0.00	\$0.00	\$0.00	\$0.00	\$0.00	\$0.00
1% IDOR/ROE Admin Fee	\$2,298.27	\$2,562.43	\$2,405.87	\$2,172.39	\$2,409.91	\$2,553.24	\$2,510.94	\$2,564.13	\$2,621.92	\$2,092.04	\$2,179.86	\$2,418.40	\$28,789.40
	\$227,528.83	\$253,680.36	\$238,181.62	\$215,066.60	\$238,580.85	\$252,770.48	\$248,583.32	\$253,848.37	\$259,569.99	\$207,111.42	\$215,806.75	\$239,421.51	\$2,850,150.10

Schuyler County

Districts Receiving Funds	July	August	September	October	November	December	January	February	March	April	May	June	Total
Astoria #1	\$746.00	\$848.48	\$810.89	\$760.23	\$758.01	\$843.83	\$923.63	\$894.41	\$901.64	\$694.16	\$703.71	\$795.92	\$9,680.91
VIT #2	\$82.89	\$94.28	\$90.10	\$84.47	\$84.22	\$93.76	\$388.90	\$376.59	\$379.64	\$292.28	\$296.30	\$335.13	\$2,598.56
Schuyler-Industry #5	\$35,642.01	\$40,538.28	\$38,742.33	\$36,322.17	\$36,216.21	\$40,316.37	\$41,417.48	\$40,107.37	\$40,431.49	\$31,127.70	\$31,555.80	\$35,690.93	\$448,108.14
Southeastern #337	\$787.44	\$895.61	\$855.94	\$802.47	\$800.13	\$890.71	\$1,069.47	\$1,035.64	\$1,044.01	\$803.77	\$814.82	\$921.60	\$10,721.61
1% IDOR/ROE Admin Fee	\$380.19	\$432.41	\$413.26	\$387.44	\$386.31	\$430.05	\$446.93	\$432.80	\$436.29	\$335.90	\$340.52	\$385.14	\$4,807.24
	\$37,638.53	\$42,809.06	\$40,912.52	\$38,356.78	\$38,244.88	\$42,574.72	\$44,246.41	\$42,846.81	\$43,193.07	\$33,253.81	\$33,711.15	\$38,128.72	\$475,916.46

Schools Served

Fulton County

Astoria CUSD #1
Canton Union School District #66
Fulton County Community Unit District #3
Lewistown CUSD #97
Spoon River Valley Community Unit District #4
V.I.T Community Unit District #2

Hancock County

Carthage Elementary #317
Dallas Elementary School District #327
Hamilton CCSD #328
Illini West High School District #307
LaHarpe CSD #347
Nauvoo-Colusa CUSD #325
Southeastern CUSD #337
Warsaw CUSD #316

McDonough County

Bushnell-Prairie City CUSD #170
Macomb CUSD #185
West Prairie CUSD #103

Schuyler County

Schuyler-Industry CUSD #5

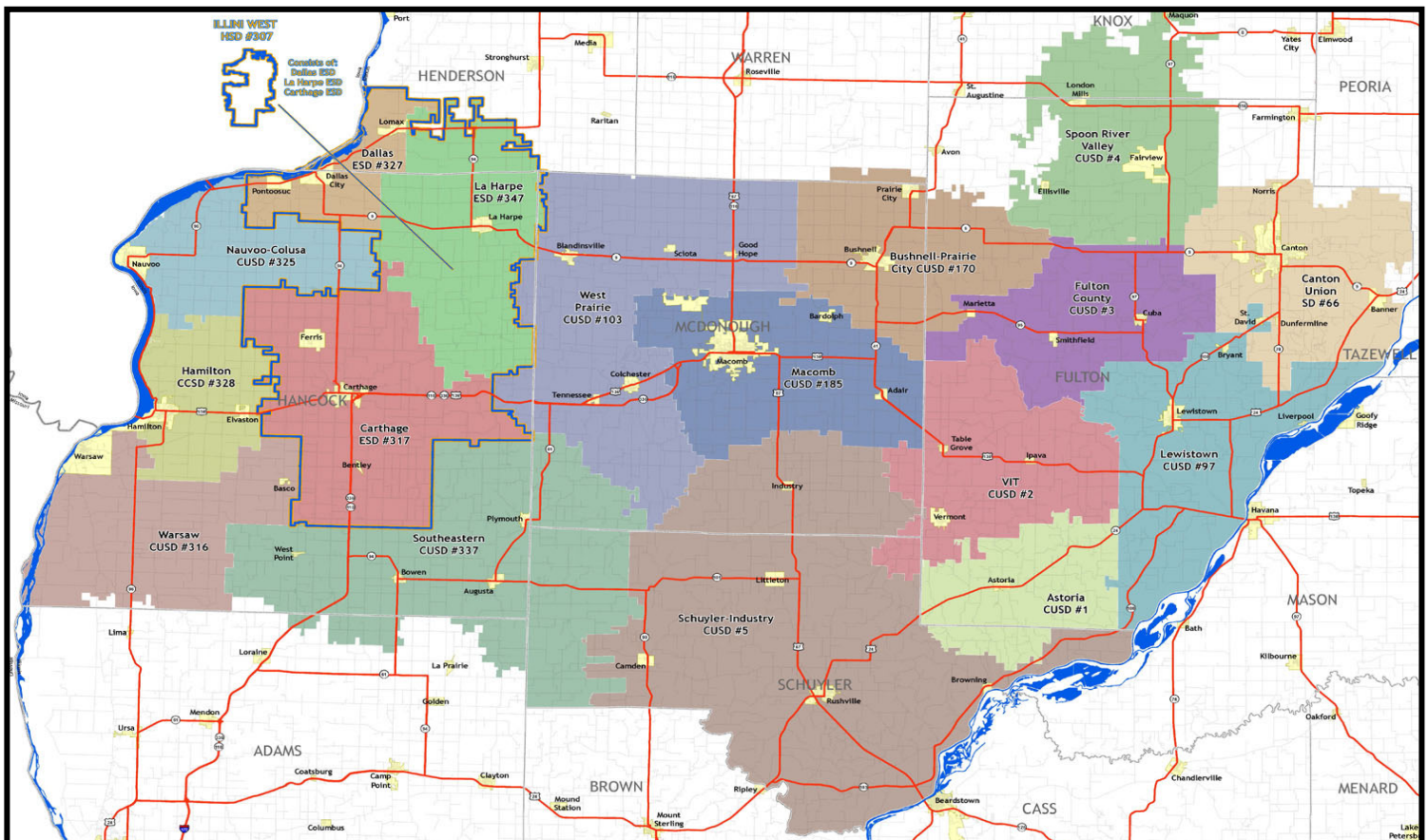
Non-Public/Private Schools

St. Paul's Catholic School, Macomb
Sts. Peter and Paul School, Nauvoo
Trinity Academy, Industry

ROYALS/Safe Schools and Alternative Academies

ROYALS Academy/Canton
ROYALS RSSP/Canton
ROYALS Academy/Carthage
ROYALS RSSP/Carthage
ROYALS Academy/Macomb
ROYALS RSSP/Macomb

School District Boundary Map





REGIONAL OFFICE OF EDUCATION



Macomb Main Office
130 S. Lafayette, Suite 200
Macomb, IL 61455
(309) 575-3226

Canton Business Office
735 E. Locus Street
Canton, IL 61520
(309) 575-3226



<https://www.roe26.net>



facebook.com/roe26



twitter.com/RegOffice26



[regionalofficeofeducation26](https://instagram.com/regionalofficeofeducation26)

